

[www.EconomicGateway.com](http://www.EconomicGateway.com)



# ECONOMIC GATEWAY

*[ Greater America Online ]*

**Golden  
Shovel**  
AGENCY



“Coming together is a beginning.

Keeping together is progress.

Working together is success.”

- Henry Ford

# THE ECONOMIC GATEWAY ADVANTAGE

Economic Gateway is a first of its kind solution to the growing need for smart, technology-based yet affordable economic development (ED) tools **among regional ED groups**.

These tools allow Greater America to compete in the global marketplace against metropolitan areas with more abundant financial resources. Each member community will overcome the challenge that is faced when costly Web presences need to be rebuilt within one to two years of creation due to obsolete content or technology. The Economic Gateway framework saves precious, limited resources by enabling **member ED groups** to easily take control of their online presence and quickly update content.

Unlike other systems that focus solely on either Web design or site locator tools, Economic Gateway combines both into one system at a cost that is affordable for organizations of all sizes. The end result is a fully functional, custom designed economic development Web site complete with a site selector map and a suite of economic development Web site modules.

Economic Gateway is ideally suited for rural groups due to the cost savings, but is scalable for more urban areas as well. It unites the region with its member organizations and allows them to share resources while maintaining individuality.

- :: **EXPANDABLE & ON-DEMAND CMS**
- :: **STATE-OF-THE-ART GIS-BASED SITE SELECTION TECHNOLOGY**
- :: **PROGRESSIVE COMMUNITY NETWORKING STRATEGY**
- :: **SOFTWARE AS A SERVICE SUBSCRIPTION MODEL**
- :: **WORLD CLASS SUSTAINABLE COMMITMENT & CUSTOMER SUPPORT**
- :: **SUPERIOR REGIONAL WEB PRESENCE / AWARD-WINNING WEB DESIGN**
- :: **DETAILED TRACKING & REPORTS**
- :: **SUITE OF AVAILABLE ECONOMIC DEVELOPMENT WEB SITE MODULES**

- \* News & Events
- \* Fast Facts
- \* EAGL-i Interactive Map
- \* EAGL-i Report Creator
- \* Resource Library
- \* Incentives Directory
- \* Staff/Board Directory
- \* Business Support Directory
- \* Real Estate Directory
- \* Community Profiles Directory
- \* Homepage Showcase
- \* Animation Elements
- \* Google™ Translation Tool



# COMPETE IN THE GLOBAL ECONOMY

**Low cost of entry for ALL communities:** Break out of the traditional contract model with monthly, quarterly, annual investment models.

**ED groups need ALL these tools:** In the current economy and with stressed budgets, organizations are often forced to compromise their ideal Web site and technology needs with the hopes of adding on modules later or not at all. With Economic Gateway there are no sacrifices!

**Always current:** Because Economic Gateway is a Software as a Service, updates and the latest versions of the technology are pushed via the web to all clients. Communities will never find their Web site outdated again.

**Immediate delivery:** Add the template design, upload graphics and set up the training. Users can complete the site all at once or enhance and grow it over time with the easy to use content management system.

**Focus programming time:** Focus on upgrades and enhancements that all clients receive at the same time. No more time consuming maintenance of already outdated software.

**No nickel and diming:** All active clients will receive hosting, maintenance and upgrades at no additional charge.

**Custom options:** Additional design elements (i.e. flash, Ajax), content site transfer, additional data sets for maps, and more can be added.

## ECONOMIC GATEWAY CONTACTS



[www.GoldenShovelAgency.com](http://www.GoldenShovelAgency.com)  
Groundbreaking Web Solutions  
for Community Development

### Sales Contact:

John Marshall, Sales  
651.353.6655 or [jmarshall@GoldenShovelAgency.com](mailto:jmarshall@GoldenShovelAgency.com)

### Business Contact:

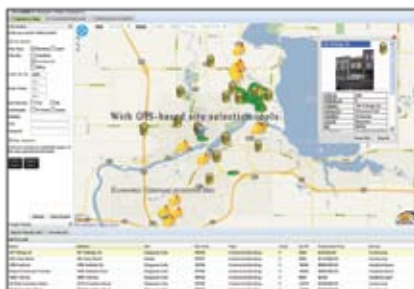
Aaron Brossoit, V.P. Business Development  
612.293.8282 or [abrossoit@GoldenShovelAgency.com](mailto:abrossoit@GoldenShovelAgency.com)

## PARTNER CONTACT – EAGL-I SITE SELECTOR TOOL



[www.adc4gis.com/EAGL-i](http://www.adc4gis.com/EAGL-i)  
EAGL-i: Siting a New Perspective.

Lindsay Olson  
Technical Accounts Manager  
1.888.933.6447  
[lolson@adc4gis.com](mailto:lolson@adc4gis.com)





We are not just 'another Web company.' At Golden Shovel, our key assets are creativity, industry knowledge and foresight. We prospect the latest technologies and trends in community development and provide them as Web solutions to our clients. We view community development as a creative endeavor, critical for a region or community to attract and retain businesses. We bring over 10 years of experience combining Web technology and design expertise to present communities in their best light. Our content management system gives community organizations full control of their Web sites while a suite of tools designed for the community development industry empowers site selectors and visitors.



[www.adc4gis.com/EAGL-i](http://www.adc4gis.com/EAGL-i)

2985 58th Street | Eau Claire, WI 54703 | P: 1.888.933.6447



[www.GoldenShovelAgency.com](http://www.GoldenShovelAgency.com)

43 East Broadway | Little Falls, MN 56345 | P: 320.639.0110 | F: 208.379.8166